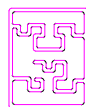
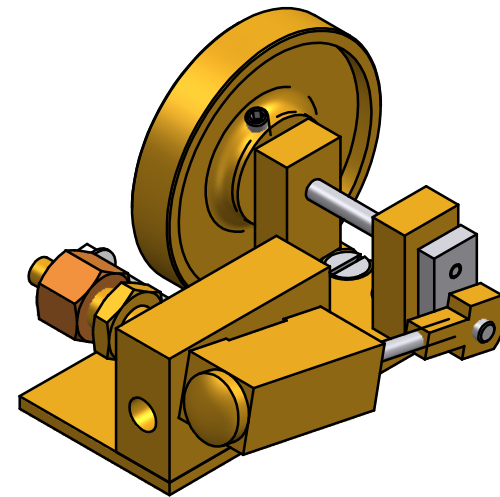
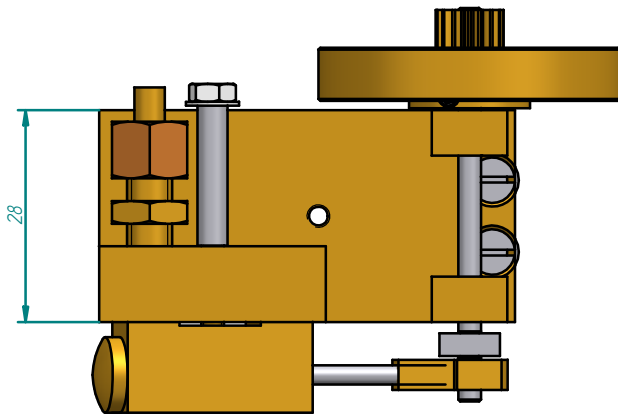
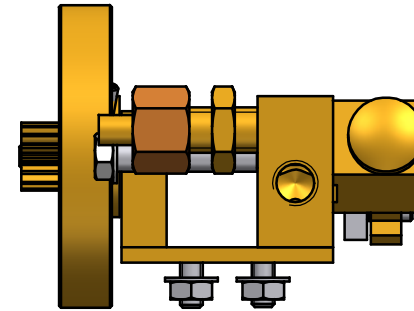
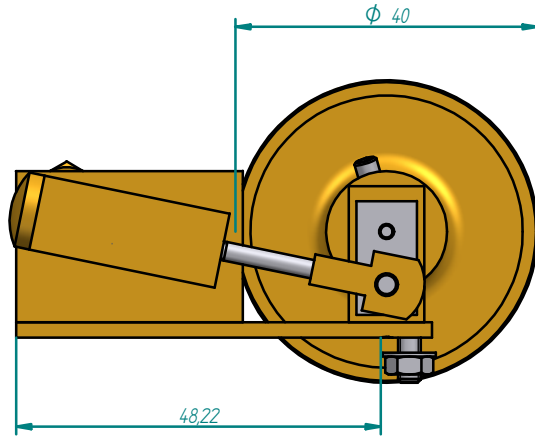


Motor tractor OTTO

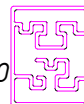
SOLID EDGE ACADEMIC COPY

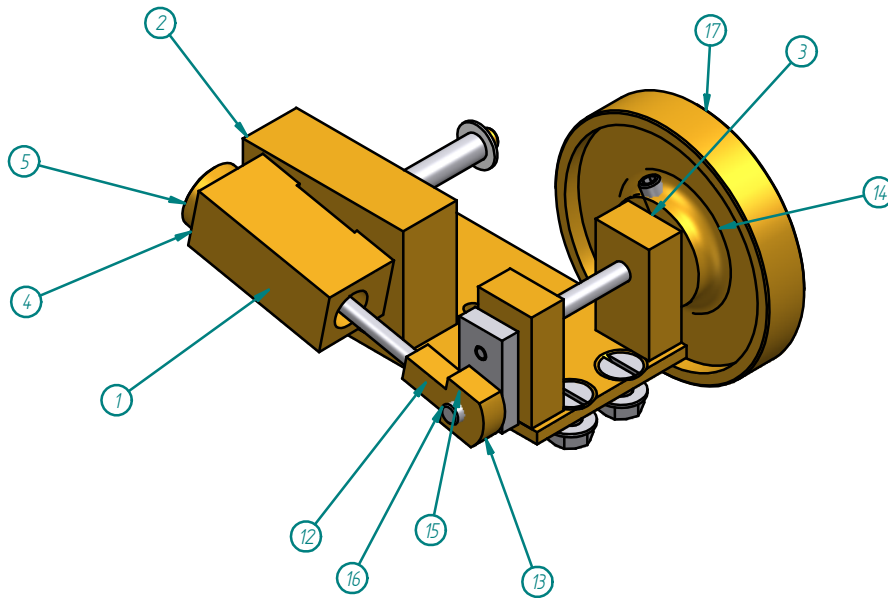




1:1

Dibujado: ___Juan___	Fecha: 19/04/2002				
Revisado: _____	Fecha: 29/04/2003				
SOLID EDGE ACADEMIC COPY		Vista general			
Motor oscilante tractor Otto				pg 1	

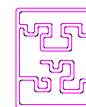




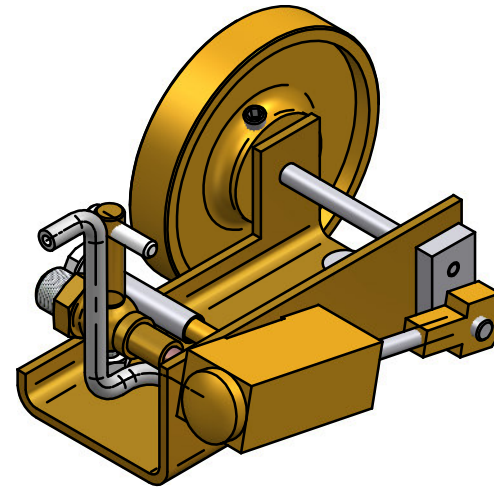
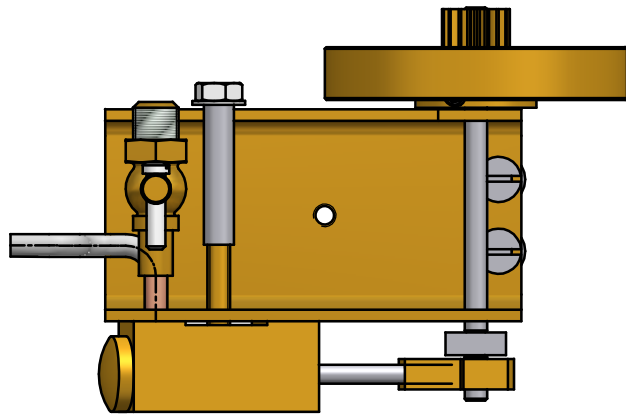
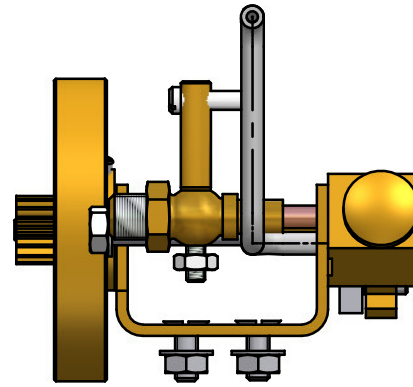
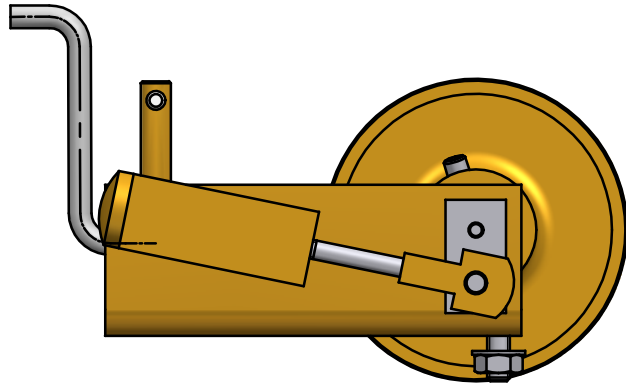
Número de elemento	Título	Material	Cantidad	Masa
1	Placa base motor	Latón	1	2227 g
2	Cárter	Latón	1	44,37 g
3	Cojinete cigüeñal	Latón	2	15,86 g
4	Cilindro Otto	Latón	1	17,71 g
5	Tapa cilindro Otto	Latón	1	2,30 g
6*	Eje Cilindro Otto	Latón	1	1,97 g
7*	Tca M3	Acero	3	1,05 g
8*	Tor avelalnado M3 x 6	Acero	6	3,09 g
9*	Arandel M3	Acero	3	0,36 g
10*	Muelle cilindro	Acero	1	0,44 g
11*	Pistón Otto	Latón	1	2,06 g
12	Biela	Acero	1	1,14 g
13	Coinete biela	Latón	1	2,43 g
14	Eje cigüeñal	Acero	1	2,44 g
15	Cigüeñal	Acero	1	2,66 g
16	Eje biela	Acero	1	0,40 g
17	Volante inercia	Latón	1	45,38 g
18*	Engrane 16 d x m05	Latón	1	1,99 g
19*	Prisionero volante	Acero	1	0,24 g
20*	Tetón racor M6	Latón	1	0,47 g
21*	Tca racor M6	latón	1	4,37 g
22*	Machón M6	Latón	1	4,62 g

Dibujado: ___Juan___ Fecha: 19/04/2002
 Revisado: _____ Fecha: 29/04/2003

SOLID EDGE ACADEMIC COPY
 MOTOR OSCILANTE OTTO

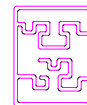


DESPIECE GENERAL

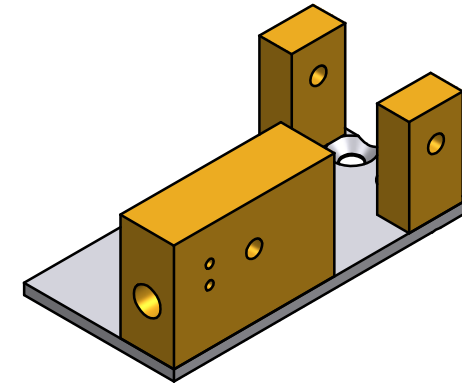
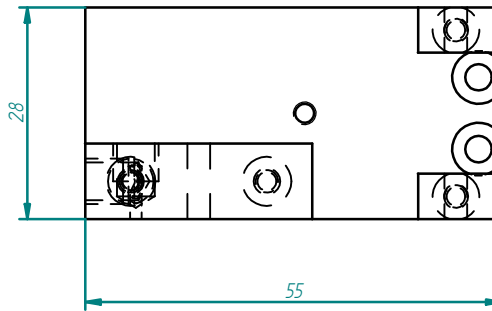
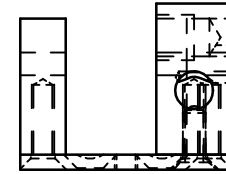
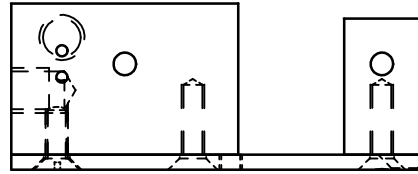
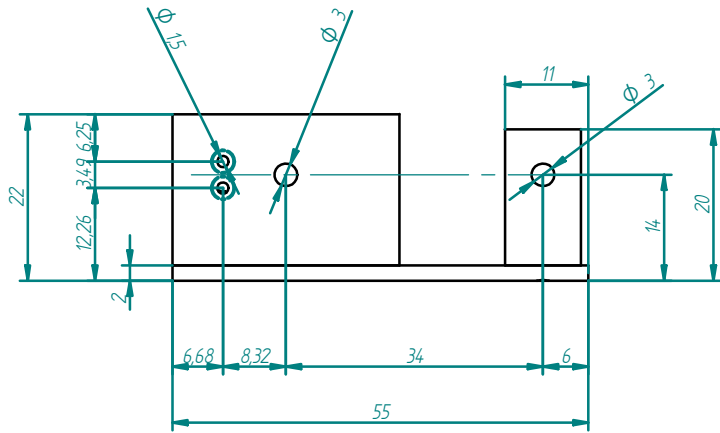


Dibujado: <i>___Juan___</i>	Fecha: 11/01/2008				
Revisado: -----	Fecha: 11/01/2008				

SOLID EDGE ACADEMIC COPY



Vista general, motor con carter de chapa

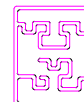


1:1

Dibujado: Juan
 Revisado: Fecha: 19/04/2002
 Fecha: 29/04/2003

SOLID EDGE ACADEMIC COPY

1.- BASE MOTOR
 MOTOR OSCILANTE OTTO



DESPIECE GENERAL

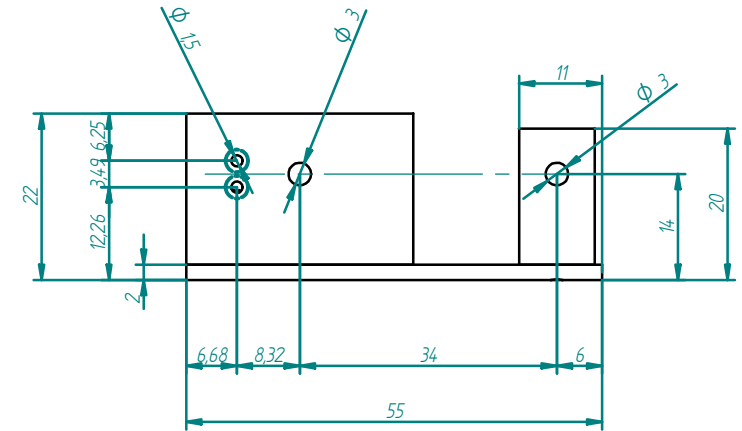
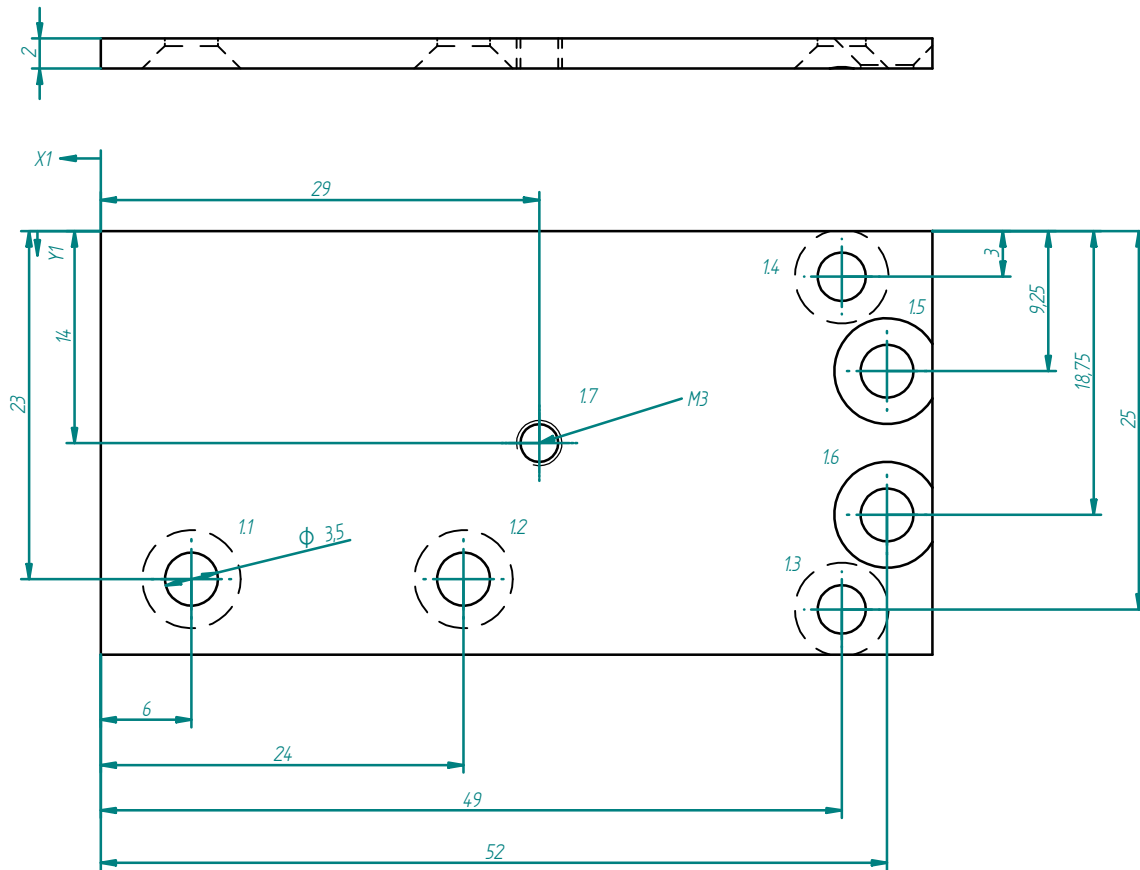


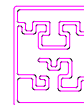
Tabla de Agujeros				
Agujero	Copias	X	Y	Tamaño
11	1	6	-23	$\phi 3.5$
12	1	24	-23	$\phi 3.5$
13	1	49	-25	$\phi 3.2$
14	1	49	-3	$\phi 3.2$
15	1	52	-9.25	$\phi 3.5$
16	1	52	-18.75	$\phi 3.5$
17	1	29	-14	$\phi 2.5$

2:1

Dibujado: ___Juan___ Fecha: 19/04/2002
 Revisado: _____ Fecha: 29/04/2003

SOLID EDGE ACADEMIC COPY

1.- BASE MOTOR
 MOTOR OSCILANTE OTTO

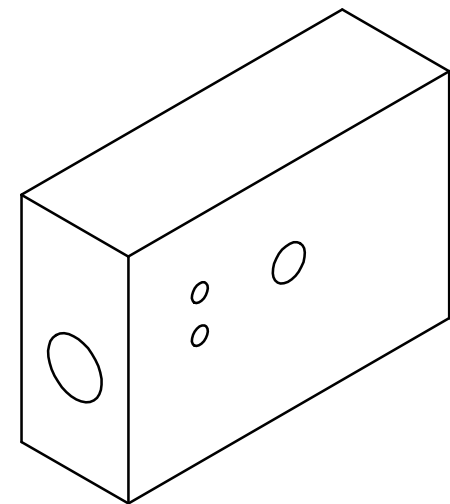
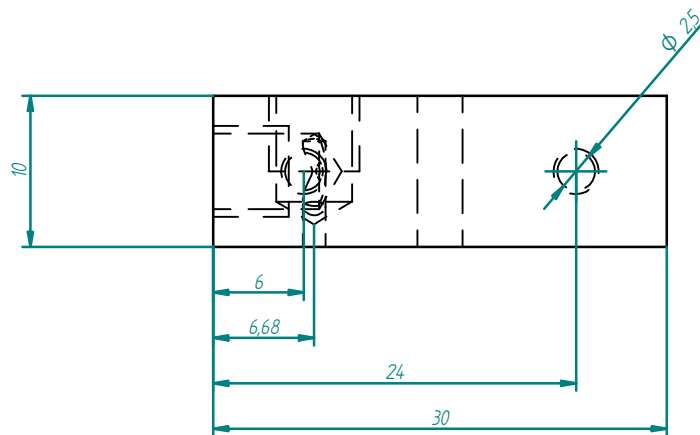
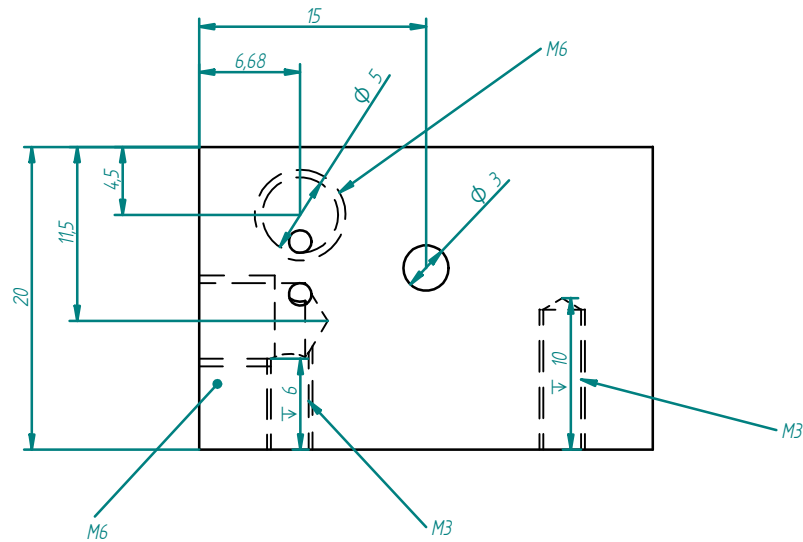
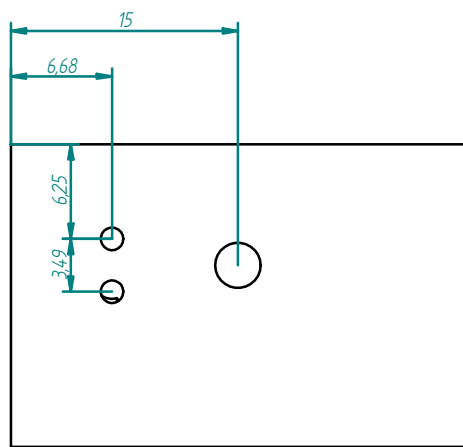


Placa base

Pieza n°5

Ll alu 55x28x2 mm

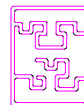
pg 5

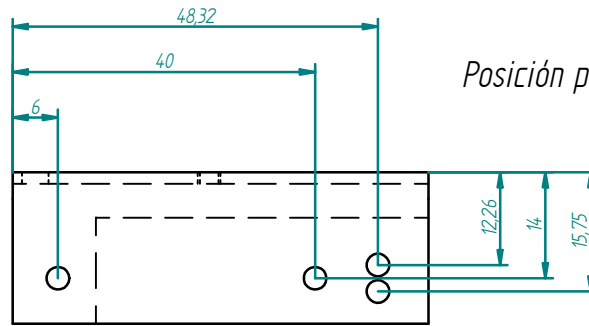
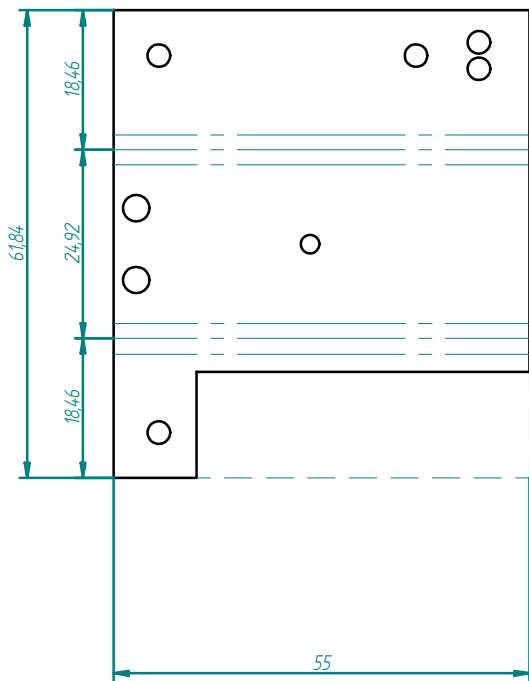


2:1

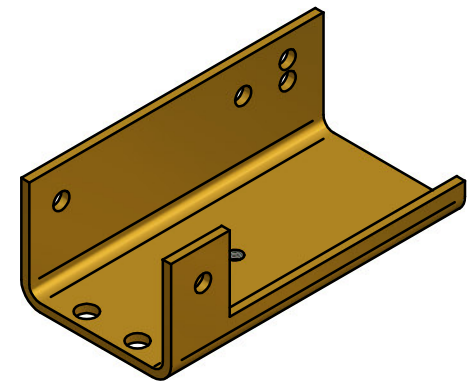
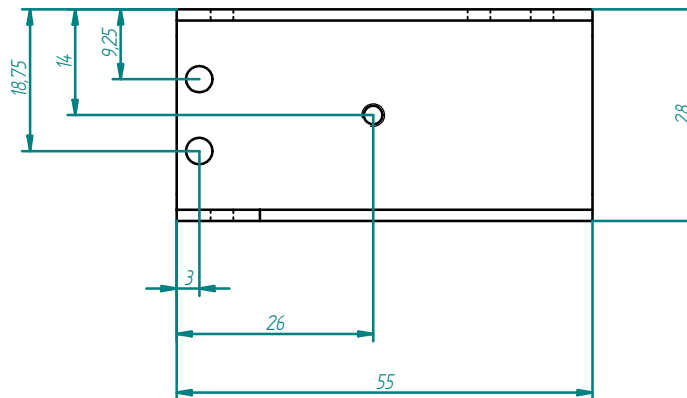
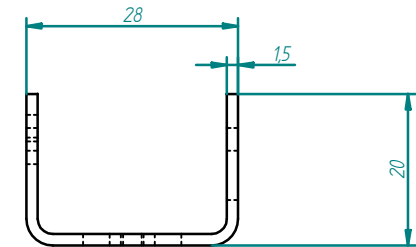
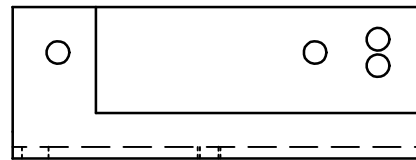
Dibujado: <u> Juan </u>	Fecha: 19/04/2002				
Revisado: _____	Fecha: 29/04/2003				
1.- BASE MOTOR MOTOR OSCILANTE OTTO		Cárter motor		Pieza nº6	
		Alu 30x20x10 mm		pg 6	

SOLID EDGE ACADEMIC COPY



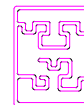


Posición para el taladrado



Dibujado: ___Juan___ Fecha: 11/01/2008
 Revisado: _____ Fecha: 11/01/2008

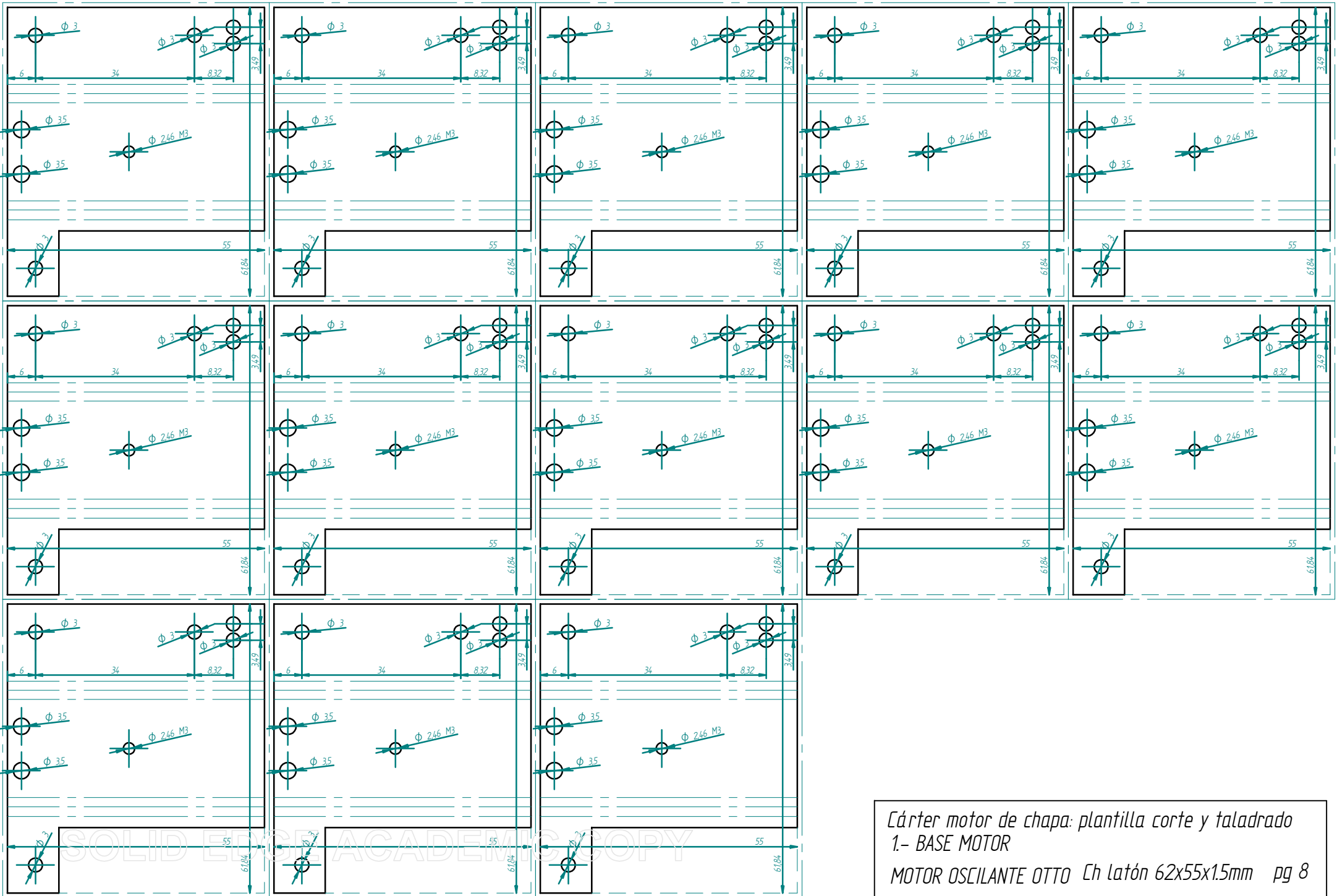
SOLID EDGE ACADEMIC MOTOR OSCILANTE OTTO



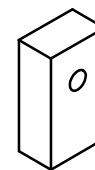
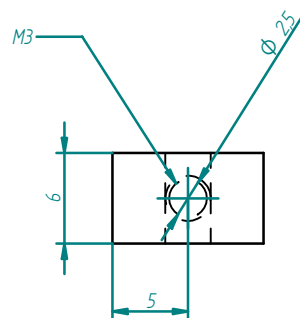
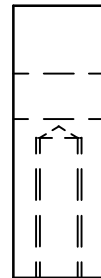
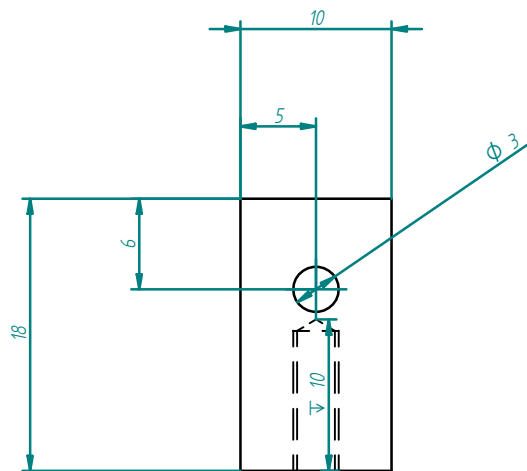
Cárter motor de chapa

Ch latón 62x55x1.5mm

pg 7



Cárter motor de chapa: plantilla corte y taladrado
 1.- BASE MOTOR
 MOTOR OSCILANTE OTTO Ch latón 62x55x1.5mm pg 8

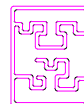


2:1

Dibujado: Juan Fecha: 19/04/2002
 Revisado: Fecha: 29/04/2003

SOLID EDGE ACADEMIC COPY

1.- BASE MOTOR
 MOTOR OSCILANTE OTTO

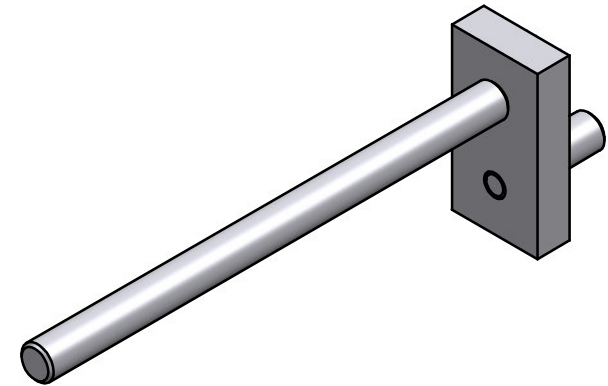
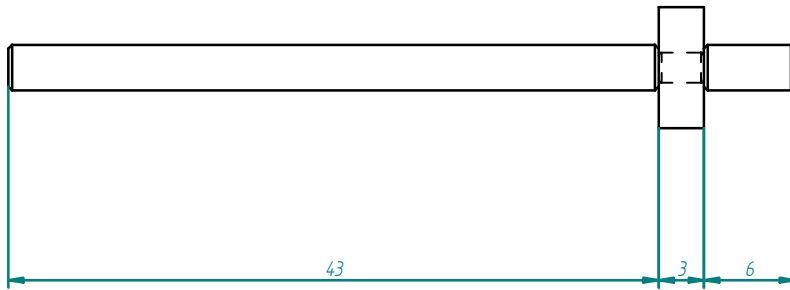
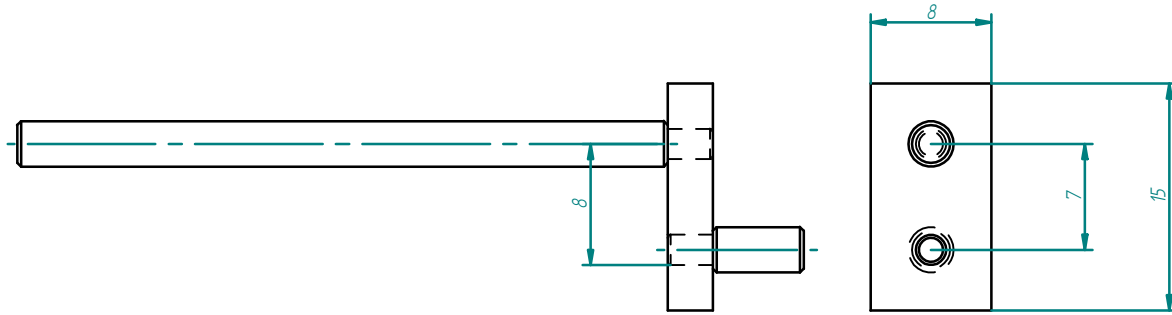


Cojinete cigüeñal

Pieza nº7

Ll alu 18x20x6 mm

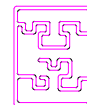
pg 9



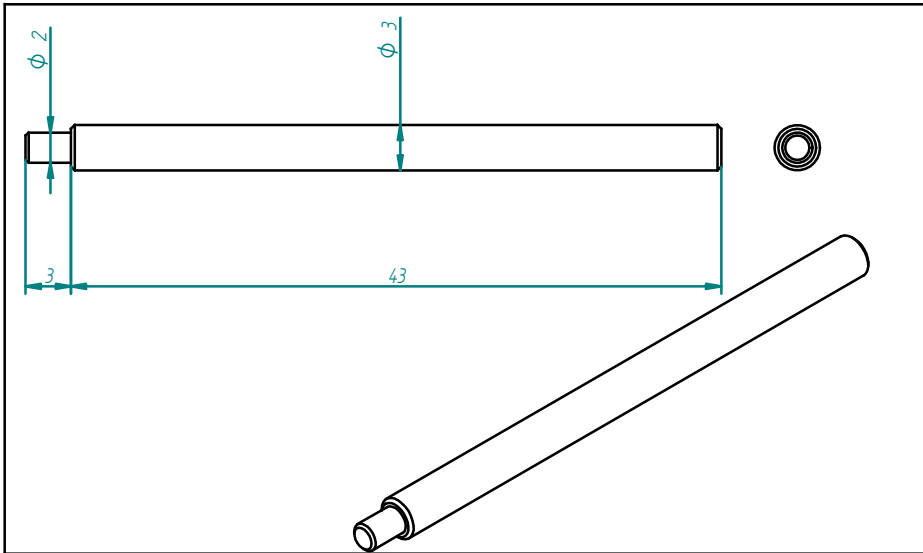
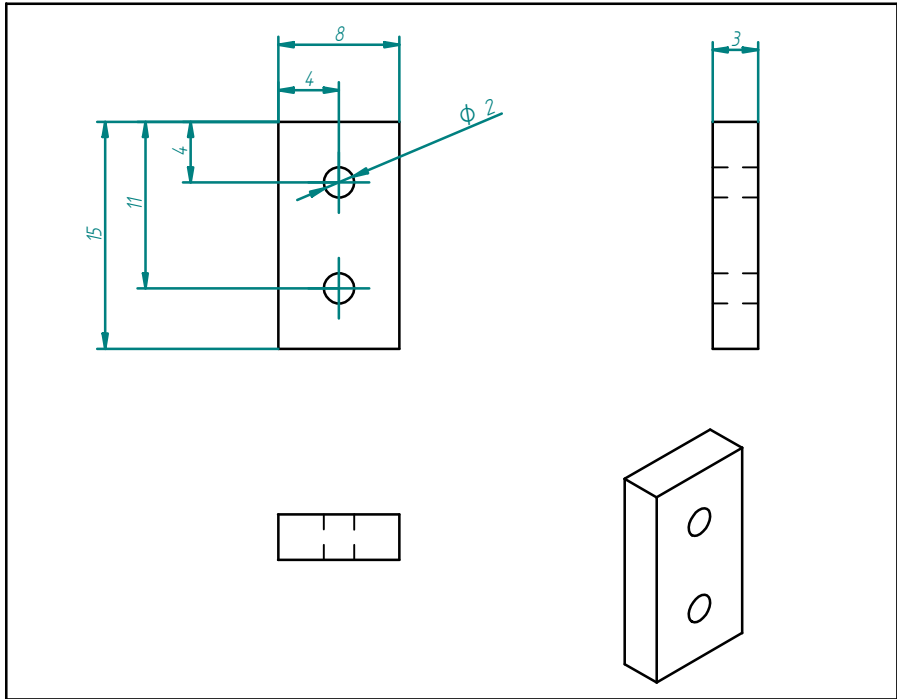
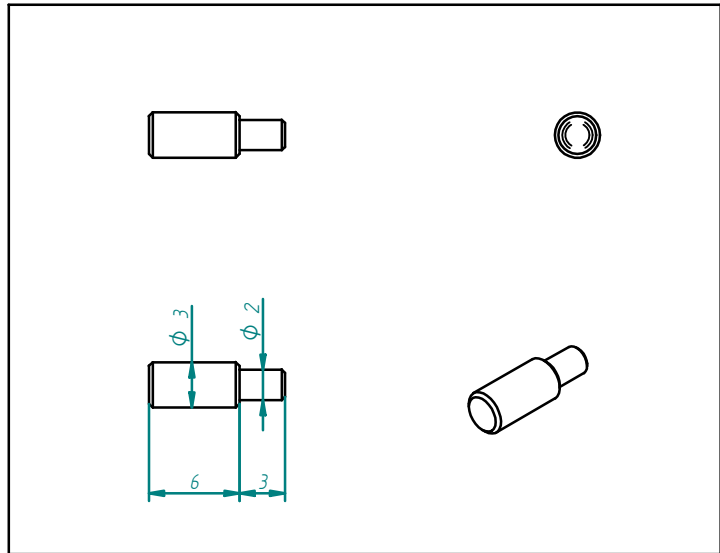
2:1

Dibujado: Juan	Fecha: 19/04/2002				
Revisado: _____	Fecha: 29/04/2003				

SOLID EDGE ACADEMIC COPY 2.- CIGÜEÑAL
MOTOR OSCILANTE OTTO



VISTA GENERAL

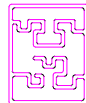


Dibujado: ___Juan___
Revisado: _____

Fecha: 19/04/2002
Fecha: 29/04/2003

2:1

SOLID EDGE ACADEMIC COPY 2.- CIGÜEÑAL
MOTOR OSCILANTE OTTO

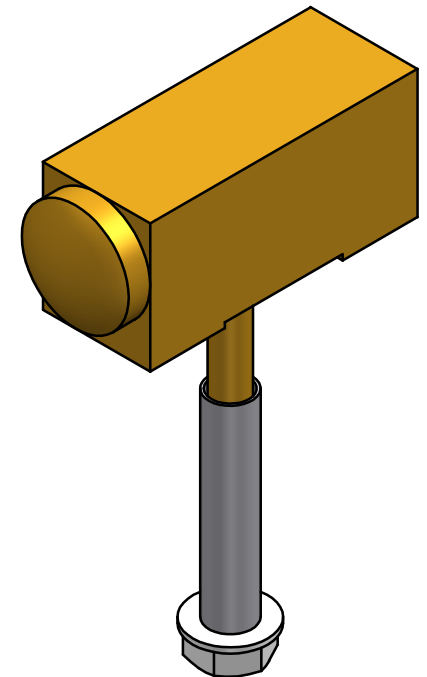
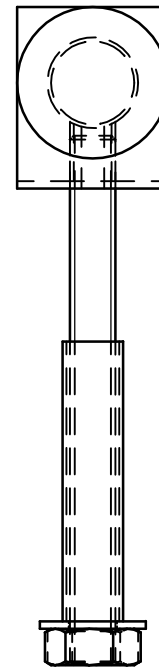
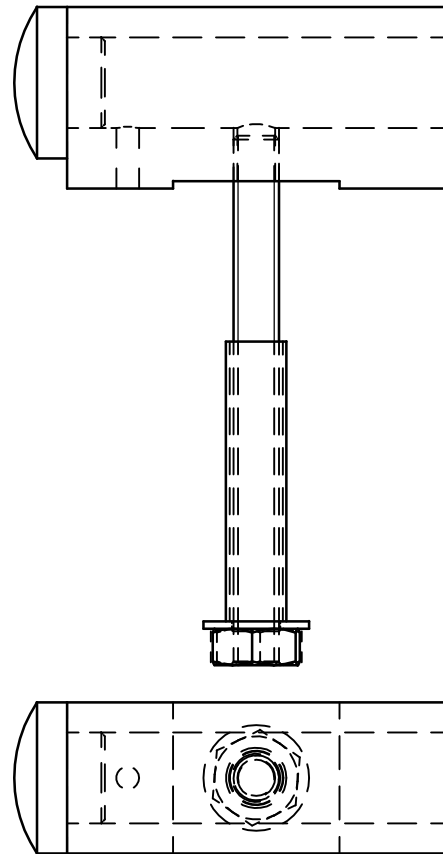


Piezas cigüeñal

Pieza nº3,4 y 13

Latón 15x8x3 y varilla Dlam 3

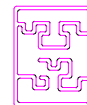
pg 11

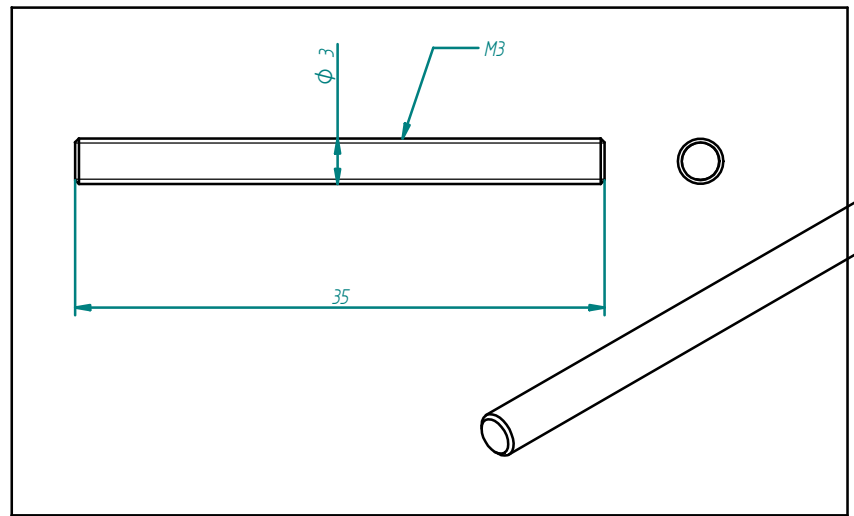
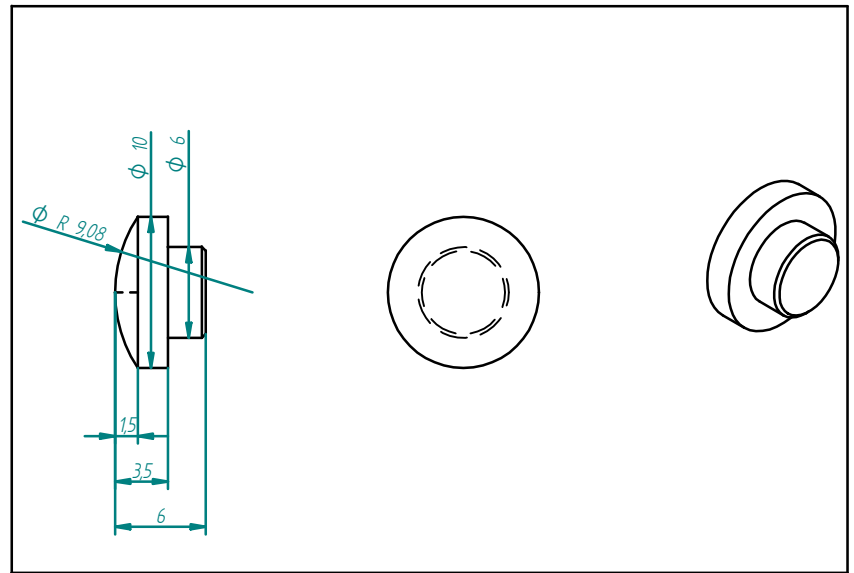
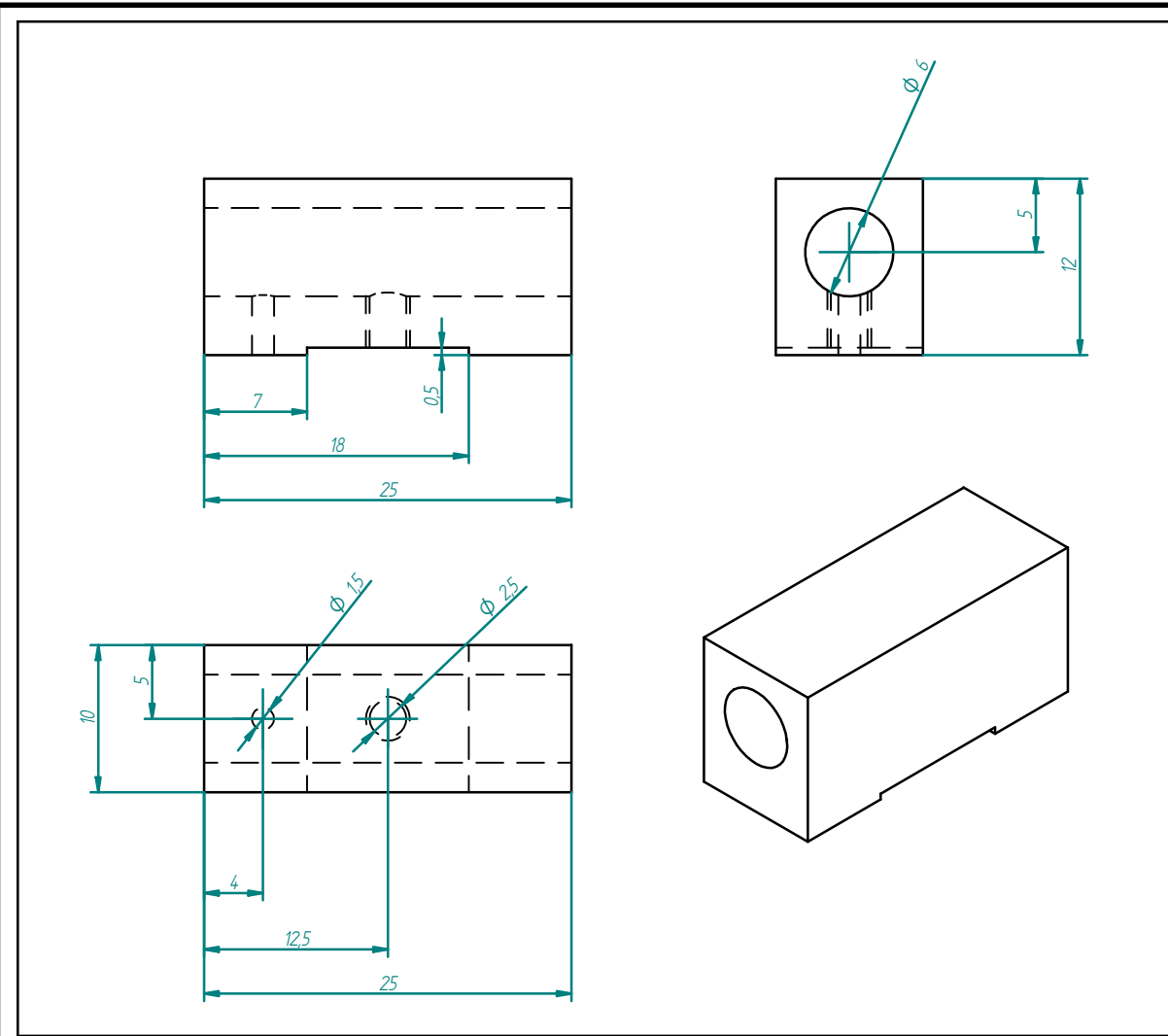


2:1

Dibujado: <i>---Juan---</i>	Fecha: 19/04/2002				
Revisado: -----	Fecha: 29/04/2003				
3.- CILINDRO		VISTA GENERAL			
MOTOR OSCILANTE OTTO				pg 12	

SOLID EDGE ACADEMIC COPY





Dibujado: ___Juan___ Fecha: 19/04/2002
 Revisado: _____ Fecha: 29/04/2003

2:1

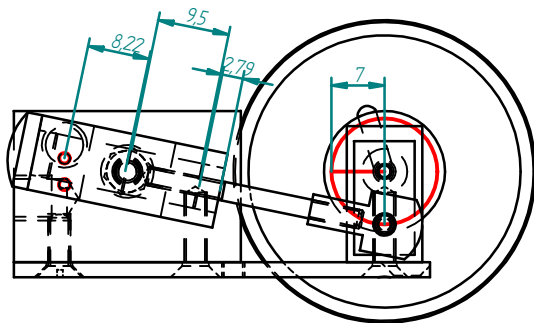
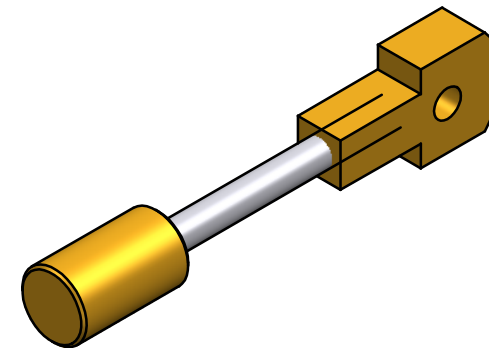
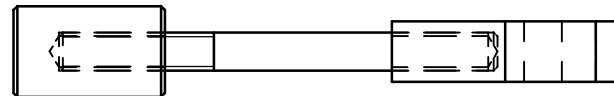
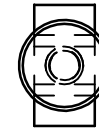
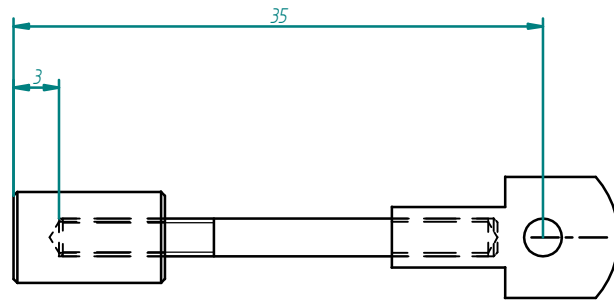
SOLID EDGE ACADEMIC COPY 2.- CILINDRO
 MOTOR OSCILANTE OTTO



Piezas cilindro Pieza n°1,2 y 8

Latón 25x12x10 y varilla Dlam 3

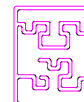
pg 13



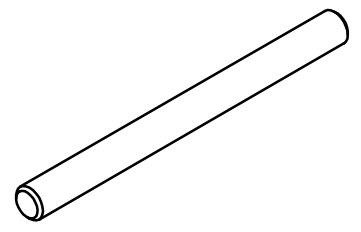
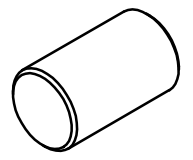
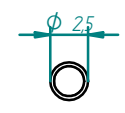
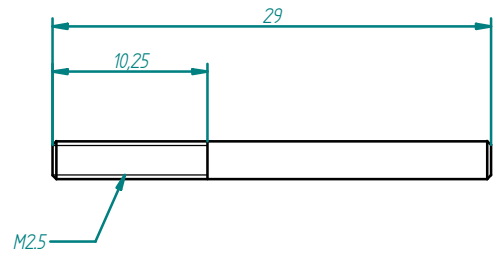
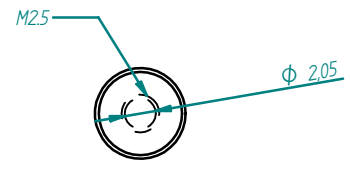
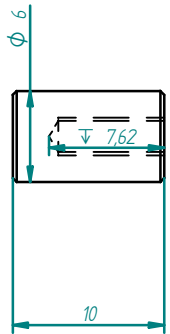
Dibujado: <u> Juan </u>	Fecha: 19/04/2002				
Revisado: _____	Fecha: 29/04/2003				

SOLID EDGE ACADEMIC COPY

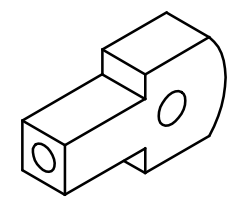
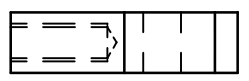
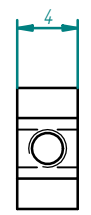
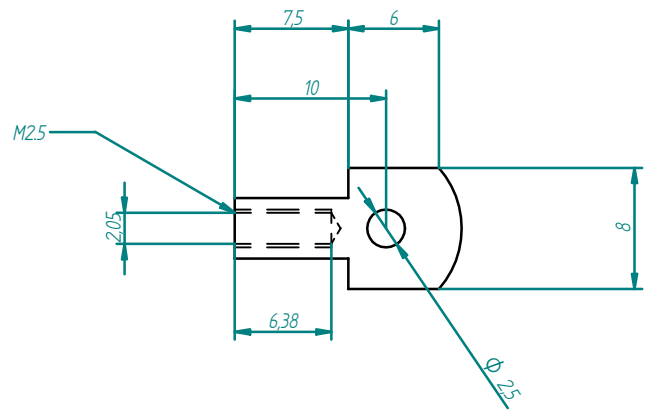
4.- PISTON
MOTOR OSCILANTE OTTO



VISTA GENERAL

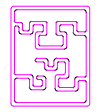


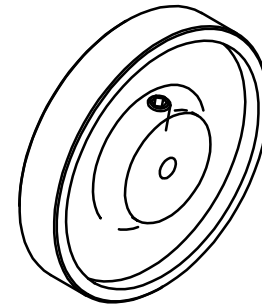
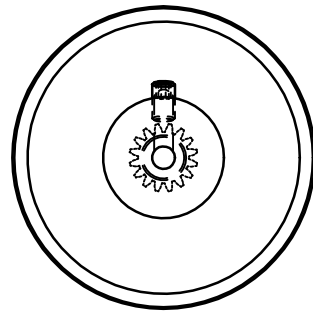
2:1



Dibujado: Juan	Fecha: 19/04/2002					2:1
Revisado: _____	Fecha: 29/04/2003					
4.- PISTON		Piezas pistón		Pieza n°9,10y12		
MOTOR OSCILANTE OTTO		Latón		pg 15		

SOLID EDGE ACADEMIC COPY

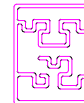




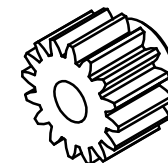
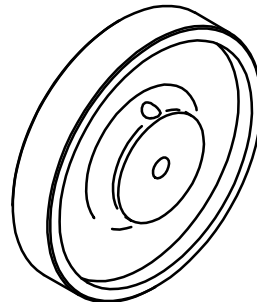
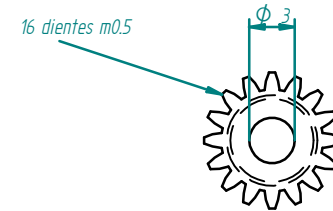
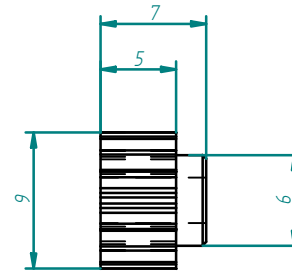
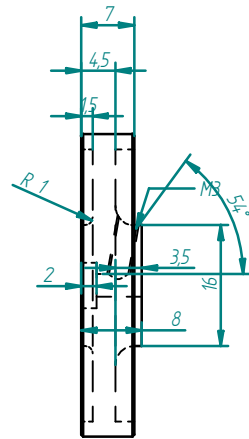
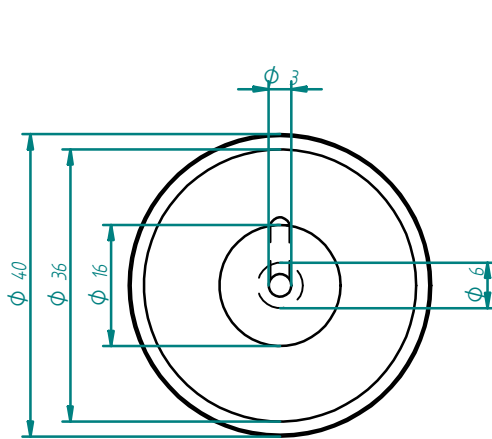
Dibujado: <i>___Juan___</i>	Fecha: 19/04/2002				
Revisado: <i>-----</i>	Fecha: 29/04/2003				

SOLID EDGE ACADEMIC COPY

5.- VOLANTE
MOTOR OSCILANTE OTTO



VISTA GENERAL



Dibujado: <u> Juan </u>	Fecha: 19/04/2002				
Revisado: _____	Fecha: 29/04/2003				
5.- VOLANTE		VISTA GENERAL		Pieza n°11y14	
MOTOR OSCILANTE OTTO		Latón diam 40 y piñón 8x mod 0.5		pg 17	

SOLID EDGE ACADEMIC COPY

